

This Guess paper is presented to our Young Viewer's
With lot's of best wishes

For
Board Exams - 2010

Vivek sir

For any queries, please feel free to contact to :-

Career Academy Tutorials

**# 66, Saket Nagar, infront of church,
Ranjhi, Jabalpur, M.P – 482005**

Mobile :- 09424677661(24 hours)

Email :- careeracademy@ymail.com

vivekjab@hotmail.com

vivekonjob@yahoo.co.in

pdfMachine

A pdf writer that produces quality PDF files with ease!

Produce quality PDF files in seconds and preserve the integrity of your original documents. Compatible across nearly all Windows platforms, if you can print from a windows application you can use pdfMachine.

Get yours now!

Guess Paper - 2010
Class - Xth
Sub : Science (Theory)

Time : 2½ Hours

Max. Marks : 60

General Instructions :-

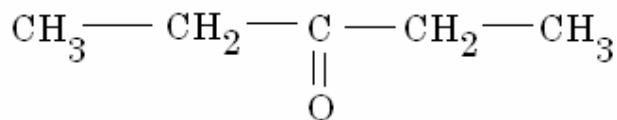
1. The question paper comprises of two sections A and B. You are suppose to attempt both the sections.
2. All questions are compulsory.
3. There is no overall choice However, internal choice has been provided in all the three questions of five marks category. Only one option in such questions is to be attempted.
4. All questions of section A and all questions of section B are to be attempted separately.
5. Questions 1 to 6 in section A and 19 to 21 in section B are short question. These carry one mark each.
6. Questions 7 to 12 in section A and 22 to 24 in section B are short answer type questions and carry two marks each.
7. Questions 13 to 16 in section A and 25 to 26 in section B are also short answer type questions and carry three marks each.
8. Questions 17 and 18 in section A and question 27 in section B are long answer type questions and carry five marks each.

Section A

1. Give an example of thermal decomposition reaction 1
2. Danger signal light are red in colour. Give reason. 1
3. The following data represents the temperature of the solution formed by the reaction of metals with dilute HCl solution

Metal	Temperature of solution (°C)
A	40.5
B	37.0
C	45.2
D	43.1

- Identify the most reactive metal among these ? 1
4. Name the type of energy obtained from sea due to the temperature difference existing between different layers of water ? 1
5. Why cannot two magnetic field lines intersect at a point ? 1
6. Write any one defect of Mendeleev's periodic table. 1
7. Write the I.U.P.A.C names of the following organic compounds. 2
- (a)



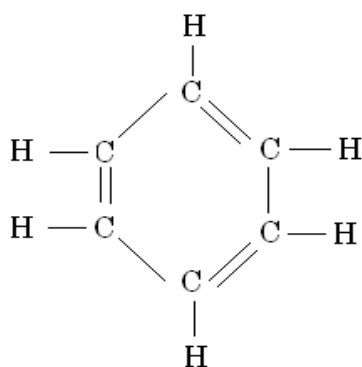
pdfMachine

A pdf writer that produces quality PDF files with ease!

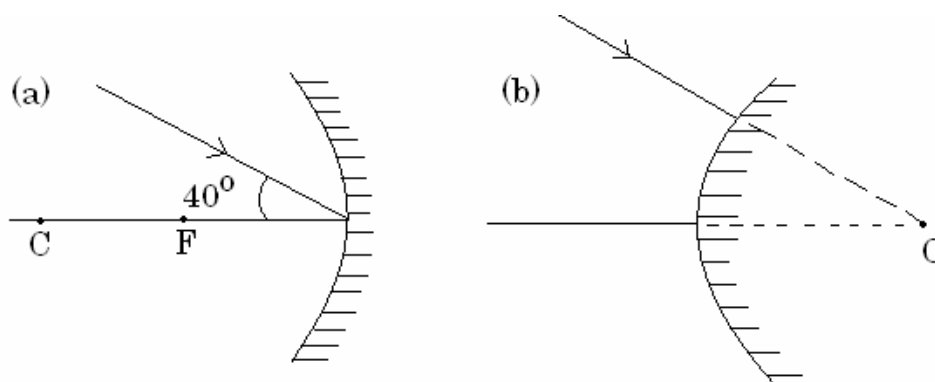
Produce quality PDF files in seconds and preserve the integrity of your original documents. Compatible across nearly all Windows platforms, if you can print from a windows application you can use pdfMachine.

Get yours now!

(b)



8. a. Represent Ohm's law graphically. 1
b. Mention any 2 factors on which the resistance of conductor depends ? 1
9. Draw the reflected ray in the following figures : 2

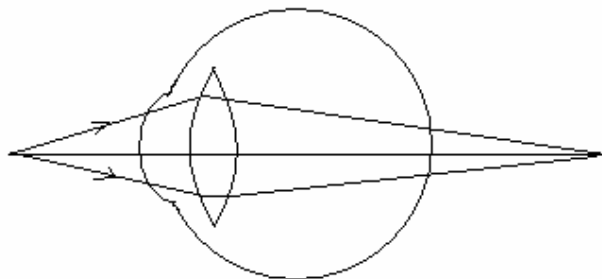


10. Give any 2 uses of :
(a) baking soda (b) bleaching powder 2
11. "Construction of big dams have certain problems associated with it." Enumerate two reasons to justify this statement 2
12. When a solution of sodium sulphate was added to Barium chloride solution in a testtube, a white precipitate was found floating on the surface of the solution :
(i) Identify the precipitate formed ? 1
(ii) Write balanced chemical reaction for the above 1
13. a. Compare the electrical conductivity of NaCl in its solid and molten states 1
b. Why is roasting done for sulphide ores ? 1
c. Name the gas released when magnesium reacts with (a) dil.HNO₃ (b) conc. HNO₃ 1
14. Study the following table :

Group 16	Group 17
--	A
B	C
--	--

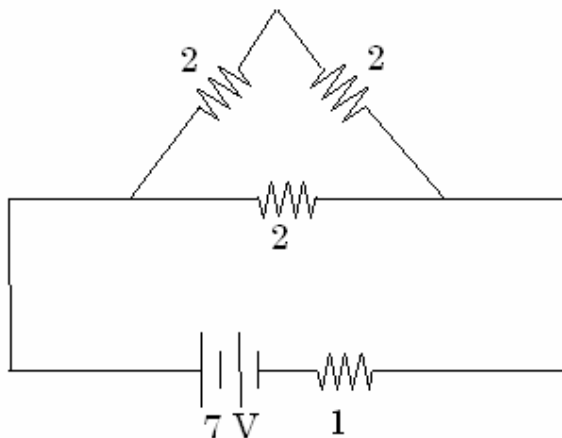
- | | | |
|------|---|---------------|
| i. | Write the valencies of A and B | 1 |
| ii. | Which is larger in size, B or C ? | $\frac{1}{2}$ |
| iii. | Which among A and C is more reactive ? | $\frac{1}{2}$ |
| iv. | Is C a metal or non-metal ? | $\frac{1}{2}$ |
| v. | Among A and B, which has a greater tendency to gain electrons ? | $\frac{1}{2}$ |

15. Which defect of vision is depicted in the below figure ?



How does this defect arise ? Draw a ray diagram to show how this defect can be corrected.

16. Calculate the voltage and power across the $1\ \Omega$ resistor in the following figure.



17. A needle placed 45 cm from a lens forms an image on a screen placed 90 cm on the other side of the lens.

- | | | |
|----|---|----------------|
| a. | Identify the type of lens. | $\frac{1}{2}$ |
| b. | Determine the focal length and power of the lens. | $1\frac{1}{2}$ |
| c. | What is the size of the image if the size of the needle is 5 cm ? | 1 |
| d. | Draw a suitable ray diagram. | 2 |

18. a. What do 'p' and 'H' in pH stand for ?

b. A solution 'A' has a pH value of 6 while another solution 'B' has a value 12. Which of these solutions have a higher concentration of OH^- ions ?

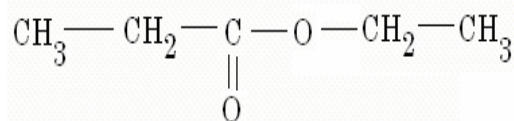
c. Sodium carbonate is treated with HCl solution and the gas evolved is passed through lime water. What changes do you observe ? Support your answer with proper chemical equations.

Or

a. Write the structural formula of ethanol.

b. Which property of ethanol makes it suitable for use in medicines like tincture of iodine, cough syrups etc ?

- c. When ethanol was made to react with an acid in presence of conc. H_2SO_4 , the following compound was obtained



- What is above reaction known as ? Name the acid which was used for this reaction. [1]
 d. Give one physical and chemical property of the compound obtained. [2]

Section B

19. What advantage does vegetative propagation offer to horticulturists ? [1]
20. Name the digestive organ which is the site of complete digestion of proteins, fats and carbohydrates. [1]
21. Consider the following food chain :
 Grass \longrightarrow grasshopper \longrightarrow frog \longrightarrow snake
 Which of these organisms will be affected most by biological magnification ? [1]
22. Compare and contrast the nervous and hormonal mechanisms for control and coordination in animals ? [2]
23. Write the four main stakeholders of forests and wildlife ? [2]
24. Differentiate between homologous and analogous organs. [2]
25. Why is the damage to ozone layer a cause of concern ? What steps are being taken to limit this damage ? [3]
26. a. Name the plant hormone which inhibits growth. [1]
 b. What are the different methods of contraception ? [2]

Or

- a. Name two sexually transmitted bacterial infections [1]
 b. How do auxins promote growth of tendril around a support ? [2]
27. The genotype of round and green seeds is RRyy and wrinkled and yellow seeds rrYY . When these two are crossed
 a. What are the expected gametes from the parents ?
 b. What kind of progeny do you expect in F_1 ?
 c. What are the recessive traits in F_1 ?
 d. Give the genotype of F_1 progeny ?
 e. What is the expected ratio of wrinkled green in F_2 ? [1 x 5 = 5]